

HAIIR

DRYERS

HAIIRHAIIR

DRYERSDRYERS

HAIIRHAIIRHAIIR

DRYERSDRYERSDRYERS

HAIIRHAIIRHAIIRHAIIR

DRYERSDRYERSDRYERSDRYERS

HAIIRHAIIRHAIIRHAIIRHAIIR

DRYERSDRYERSDRYERSDRYERSDRYERS

HAIIRHAIIRHAIIRHAIIRHAIIRHAIIR

DRYERSDRYERSDRYERSDRYERSDRYERSDRYERS

HAIIRHAIIRHAIIRHAIIRHAIIRHAIIRHAIIR

DRYERSDRYERSDRYERSDRYERSDRYERSDRYERSDRYERS

HAIIRHAIIRHAIIRHAIIRHAIIRHAIIRHAIIRHAIIR

DRYERSDRYERSDRYERSDRYERSDRYERSDRYERSDRYERSDRYERS

HAIIRHAIIRHAIIRHAIIRHAIIRHAIIRHAIIRHAIIRHAIIRHAIIR

DRYERSDRYERSDRYERSDRYERSDRYERSDRYERSDRYERSDRYERSDRYERS

SILVER BULLET

STYLE PRO 2200W

PROFESSIONAL SALON HAIR DRYER



2 SPEED & 3 HEAT SETTINGS



AUTO OVER-HEATING PROTECTION SYSTEM



PROFESSIONAL LONG-LIFE AC MOTOR



COLD SHOT BUTTON



LIGHTWEIGHT AT ONLY 541G



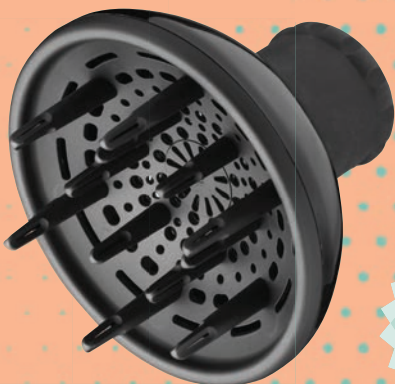
2 NOZZLES INCLUDED



Black
19210

Grey
19209

Diffuser
19373



NEW!

SILVER BULLET

IONIC

VOLTAGE 220-240

SA 3 PIN PLUG

2.8M CORD

SuperHP™ High Performance Professional Hair Dryer with 3 Brushes

No matter the hair type, condition or style, this all-powerful hair dryer is the tool to unleash your creative power! Complete with a free gift of two radial & one paddle Olivia Garden NewCycle™ brushes!

- 1875 Watt with super powerful airflow for extremely quick drying.
- 3 speeds, 3 temperatures.
- Ultra-lightweight at only 370g.
- Unique ergonomic handle for total control & comfort with special curvature for the thumb.
- Intelligent heat control guarantees consistent temperature & prevents hair damage.
- State-of-the-art efficient brushless motor uses less energy than traditional dryers.
- Powerful ionic generator seals in moisture & eliminates frizz.
- Advanced memory function recalls last chosen settings.
- Extremely lightweight & quiet.
- Self-cleaning function.
- Concentrator nozzle, diffuser & cleaning brush included.

18683



Unique dual filter design for ultimate motor protection. Removable back filter to easily clean internal filter with total 360° access. Cleaning brush included.



Cold shot button
3 heat settings
3 airflow speeds
Reverse airflow button for easy self-cleaning



Lock button conveniently locks settings while in use

2 Comb Attachments (Single & Double Row),
Concentrator Nozzle & Cleaning Brush
19089



NEW!

No matter the hair type, condition or style, this versatile hair dryer is the tool to unleash your creative power!

- Ceramic technology helps prevent heat damage & adds shine
- Powerful 2000 Watt, A/C motor
- Fast drying
- Ultra light (only 539g)
- 2 speeds, 3 heat settings
- Cool shot button
- Ionic generator
- Seals in moisture & eliminates frizz
- Easy to clean removable air filter
- 2 nozzles included - 65mm & 80mm
- Drawstring storage bag included

15638



Diffuser
Snap-on, 5 inch diameter
(sold separately)
15639



ULTRA LIGHT



FAST DRYING



CERAMIC



IONIC



PARLUX - DIGITALYON: AIR IONIZER TECH



An evolution of the flagship Alyon® hairdryer, the Digitalyon® is the best of the best from Parlux. This is for the most hardcore user, for those that demand the best.

Packed with features, this dryer redefines what a hairdryer can do. Its unique combination of lightweight design & immense power means the Digitalyon® can handle any styling & drying situation you throw at it.

- More powerful than ever at 2400 Watts.
- 2 speeds & 4 temperatures.
- Antibacterial paint coating enriched with silver powder that prevents the proliferation of bacteria.
- New wave heating element for uniform heat distribution.
- Ergonomic: lighter components & perfectly balanced.
- E-LYON® motor delivers more power, with an increased lifespan of over 3000 hours.
- Patented HFS - HAIR FREE SYSTEM: any hair that enters the dryer is forced to the back of the dryer motor & concentrated on a removable screw that is detached from the back of the dryer.
- Cool front end allows you to grab the front of the dryer.
- Includes 2 new SLIM "straightener effect" nozzles.
- 3.3 meter super-strong cable with swivel end.



Silver
18445



Anthracite
18446

INTRODUCING THE NEW PARLUX ETHOS®

EXPRESS YOUR TALENT BY EXPLORING NEW STYLE UNIVERSES.
Digital excellence for professional styling without boundaries!



Two nozzles included
(Standard & slim)

Designed with an
exclusive texture

The perfect combination of classic design & Parlux ETHOS® digital technological innovation, offers exceptional performance & reliability that improve professionals' daily work & user experience. The professional digital motor & high quality construction guarantee lightness, power & sturdiness, maintaining the heritage & values that have distinguished the Parlux brand for over 40 years.

Available in Titanium
19197



Air Ionizer Tech

Thanks to Air Ionizer Tech Technology, Parlux ETHOS® emits negative ions, accelerating the drying process & neutralizing static electricity. The result is soft, silky & shiny hair, free from frizz.



HFS Hair Free System

Innovative HFS "Hair Free System" hair catcher that enables the user to keep the hairdryer clean with a simple daily action.



More powerful

An ideal power output of 2300 Watts which, combined with optimised temperatures, ensures fast & flawless drying in just a few steps, turning every styling moment into a unique experience.



Lighter, perfectly balanced

Thanks to its small diameter & pleasant, classic handle design, the ETHOS® offers impeccable ergonomics & balance, restoring the exceptional usability of traditional Parlux professional hairdryers. This allows hair stylists to work with maximum freedom of movement & comfort for intensive use in the salon without tiring.



New digital switches

Newly-designed fully digital interface for maximum ease of use & customization.



9 combinations 3 speeds - 3 temperatures

Digital interface for a fully customizable drying experience like never before, 9 possible speed/temperature combinations. Thanks to the memory function, you'll find your last setting when you switch on for quick & immediate use.



ON/OFF button with lock



Long-lasting

The patented "STC - Special Twisting Cable" offers unprecedented freedom of movement. Its innovative technology allows the cable to freely rotate 360°, eliminating kinks & enabling more comfortable & efficient cable management during use.



parlux
ETHOS®
AIR IONIZER TECH

- Maximum durability
- Perfect combination of wattage, air quality & temperature
- Lightweight
- Strong focus on user comfort
- Air Ionizer Technology which removes static electricity from the hair, making it soft & shiny
- Low environment impact
- Longer lifespan of over 3000 hours
- 2250 Watt
- Ionic technology
- Anti-heating front body
- Cold air button
- Built-in cable holder
- 2 speeds, 4 temperatures
- 3 meters of extra strong cable
- Hair Free System included, enables the user to keep hairdryer clean with a simple daily action
- 2 nozzles included



Yellow
14435



Pink
14436



Red
18257



Turquoise
14439



Gold
Antibacterial paint coating, enriched with silver powder that prevents the proliferation of bacteria & microbes on the dryer surface. A more hygienic way to dry.
17710



Bronze
14440



Matte Graphite
14441



Matte Black
14442



Night Blue Dryer & Diffuser Set
16609



Night Blue
Antibacterial paint coating, enriched with silver powder that prevents the proliferation of bacteria & microbes on the dryer surface. A more hygienic way to dry.
16608



Jade
15624



Parlux Alyon Diffuser
14634

The technological restyling of the Parlux 3200® PLUS combines the power associated with a new one suction concept, ensuring quieter & fast drying. Redesigned for an even more professional experience.

Equipped with 2 nozzles with a secure, precise & quick adhesion. One for a perfect setting of the hair & the other for fast drying.

LIGHT WEIGHT

Reducing the weight of all the components has created an exceptionally light hairdryer for maximum comfort.

- 1900 Watt
- Long life of over 2000 hours
- 2 speeds, 4 temperatures
- Instant cold shot button
- 2.8m cable

NEW ASPIRATION

Designed to optimize drying thanks to a greater air flow.

MANAGEABLE

Ergonomic handle for more balance & comfort of use.



Red
15625



Fuchsia
15626



Violet
15627



Black
15628



Silver
15629



Diffuser for 3200 PLUS
15630

PARLUX ADVANCE LIGHT



Superior performance, higher power & longer lifespan.

- 2200 Watt
- Longer life: 2500 hours
- Less noise - incorporated silencer
- 2 speeds, 4 temperatures
- 2 nozzles included
- Eco-friendly Ionic & Ceramic technology
- Lightweight at 456g
- 2.8m cord



Ice
12204



Fuchsia
12207



Red
12209



Spare Advance Nozzles, 2 Pack
(Large & Small)
13692



White
12211



Light Gold
12212



Black
12213

Diffuser for Parlux Advance Light
12214

PARLUX SUPERTURBO HP



Exclusive to HH&B

- High power at 2400 Watt
- Lifespan of over 1800 hours
- 84 Cubic meters/hour for fast drying time
- 2 speeds, 4 temperatures
- 2 nozzles included
- 3 meter strong cable

12124



Diffuser for Superturbo HP
15630



PARLUX 3800 CERAMIC & IONIC ECO FRIENDLY



- 2100 Watt
- 4 temperatures, 2 speeds
- Eco-friendly
- Lightweight at 500g
- Low noise
- Made of energy-saving, ozone friendly, recyclable materials.
- Larger than Parlux 3500, smaller than the Parlux 3200.
- Includes 2 nozzles



Black
5756



Red
10553



Silver
5757



Purple
10554



Spare Nozzles, 2 Pack
(Large & Small)
13689



Diffuser for 3800
5760

PARLUX 385 POWERLIGHT



White
9343



Silver
9341



- 2150 Watt
- Ionic & Ceramic
- Very light
- 4 temperatures, 2 speeds
- Eco-friendly
- Includes 2 nozzles



Diffuser for
385 Powerlight
9346

Violet
9344



Black
9345



Red
9340



Spare Nozzles, 2 Pack (Large
& Small)
13687



PARLUX 3500



- 2000 Watt K-Lamination motor emits 73 cubic meters of air.
- Compact design makes it the perfect travel companion.
- Designed for long-lasting durability, reliability & performance.
- Weight: 500g
- 4 temperature, 2 speed settings
- Instant cold shot button
- Includes two concentrator nozzles

Diffuser for 3500
4161



Spare Nozzles, 2 Pack
(Large & Small)
13690



Black
4905



Silver
4906

PARLUX 2800



- 1760 Watt
 - Glossy black finish
 - Weight: 590g
 - 2 speeds, 4 temperatures
 - Instant cold shot button
 - Includes two nozzles
- 2173**



Spare Nozzles
Fits the Parlux 2800 & 3000.
2 Pieces
13691

PARLUX ACCESSORIES



Magic Sense Diffuser
A revolutionary way to dry curls & style hair. The size & openings have been designed to create the perfect temperature & airflow combination for quicker drying, better curls & less frizz. Its external cover & anti-heating design makes it more comfortable & safe to use. The 15 massaging prongs stimulate the scalp as you dry.

Fits all Parlux hairdryers, **except the Parlux 385 & Parlux 3500.**
16610



Melody Silencer
To be placed on back of dryer to significantly reduce noise. Small, light & easy to install. Can be used on all Parlux dryers.
6679



VERY IMPORTANT! - Keep filter of hairdryer clean; normally clean at least once a day. Your dryer will last much longer.

ARIA

- 2200 Watt at only 380g
- Air path & cutting-edge technology for exceptional performance of 111m3/h
- Tourmaline-coated grill ionizes hair for shine
- 2 speeds, 2 temperatures

- Instant cold shot button
- Ergonomic with quieter motor
- 3 meter bell-shaped cord & rounded side switches
- 2 nozzles included



Black
15821



Pearlised Blue
15823



Rose Gold
15824

PHON

- 2000W
- 2 speeds, 6 temperatures
- Cold shot button

- Lightweight at only 530g
- One nozzle included
- 3 meter bell-shaped cord



Pink
11733



Lime
11735

BARBER PHON

A traditional design in black finish. A dedicated facial hair dryer to keep beards & moustaches looking their absolute best. One of the only hair dryers designed for this kind of coarse hair.

- 2000 Watt
- Insulated heating element so handle stays cool
- Tourmaline-coated grill
- Ergonomic grip
- Separate hair & beard settings
- 2 heat settings
- Cold shot button
- Includes 2 concentrator nozzles & a dryer hook

18377



L'ITALIANO

Great value, lightweight & powerful. 100% Italian designed.

- 2000 Watt
- Lightweight at 500g
- 2 speeds, 4 temperatures
- Ergonomic grip
- Beautiful finish
- One nozzle included



Yellow
14670



Orange
14671

Vanquish Dryer

Offering 4 heat & 3 speed settings with a powerful brushless motor, the Wahl Vanquish™ 1600 Watt Professional Hair Dryer sets a new standard for hair styling.

- 1600 Watt.
- 4 heat & 3 speed settings.
- Weight: 320g.
- Includes 2 magnetic concentrator nozzles (narrow & wide) & magnetic diffuser.
- SmoothTone™ motor removes harsh frequencies & noise.
- Integrated ionic function reduces frizz while improving drying speed.
- LED setting indicator.
- Auto-clean function enhances cleaning convenience.
- 3 meter professional power cord.
- Hanging loop for storage.

19668



5 Star Barber Dryer

Classic chrome finish & sturdy design, this dryer fits in in any trendy barbershop. Intended for use on all lengths & types of hair.

- 2200 Watt
- Ionic technology with tourmaline grill for faster drying & better shine
- 2 speed settings & 3 heat settings
- Concentrated airflow
- Cold shot technology to hold styles in place
- Removable filter that is easy to clean
- Lint guard at back of dryer keeps dryer clean & improves durability
- 2 concentrator nozzles included

18539



JAGUAR



HD CALIMA

- 2000-2200 Watt (220-240V)
- Professional hairdryer with AC motor
- Air volume: 294 l/s
- 2 speeds, 4 temperatures
- Weight: 515g
- Ergonomic handle design suitable for right & left-handers
- Instant cold button
- 1 top nozzle 60mm
- 2.8 meter power cable



Spare Nozzles
60mm **16184**
75mm **16183**

Diffuser **16185**

DRYER ACCESSORIES

Spiral Hairdryer Holder with Screw Cover
2347

Plastic Dryer Holder with Suction Cups
1145

Wall Mounted Hair Dryer Holders
Brushed Aluminium
4576

Wall Mountable for Dryer Fitted with Nozzle
3749

Aluminium, Wall-Mountable
3542

Termix Wall-Mounted Dryer Holders, Transparent
1957

TERMIX
PROFESSIONAL

Hot Iron & Tong Holster, Hot Pink
A professional heat-resistant silicone holder for hot styling tools - designed for the professional stylist. Heat-resistant to 260°C.
8976

Holster for Retail & Home Use
Hot Pink **9053**
Purple **9054**

Hot Sock Diffuser
11658

Metal In-Bench Holder, Black

Tong/Iron, Round 5cm diameter **3276**

Dryer, Oval 8cm diameter **3275**

Soft Mitt Diffuser
Ideal for travelling. Dryer not included.
1143

Dryer Hanger, Rubberized Coating
10630

Smart Universal Diffuser with Silicone Nozzle
11327

50mm internal diameter

Universal Diffuser Fits most dryers.
1144

45mm internal diameter

PIK Universal Diffuser
4401

50mm internal diameter

Smart Universal Dryer Comb with Silicone Nozzle
Perfect for thick hair.
11062

50mm internal diameter

Universal No Prongs Diffuser

50mm internal diameter

Pink **7042**

Black **9337**

Bonnet for all Hair Dryers
9374

Slimline Nozzle Attachment
Clips on any nozzle (not included) for any dryer, in order to direct the heat onto the hair. For smoother blow-drying. 2 pieces/set, 60mm long
12108